

APPENDIX J – MANUFACTURERS’ SPECIFICATIONS

Hi-MO 5

LR5-72HBD 525~545M

- Based on M10-182mm wafer, best choice for ultra-large power plants
- Advanced module technology delivers superior module efficiency
 - M10 Gallium-doped Wafer
 - Smart Soldering
 - 9-busbar Half-cut Cell
- Globally validated bifacial energy yield
- High module quality ensures long-term reliability

12

12-year Warranty for Materials and Processing

30

30-year Warranty for Extra Linear Power Output

Complete System and Product Certifications

IEC 61215, IEC 61730, UL 61730

ISO 9001:2015: ISO Quality Management System

ISO 14001: 2015: ISO Environment Management System

TS62941: Guideline for module design qualification and type approval

ISO 45001: 2018: Occupational Health and Safety

LONGI



21.3%
MAX MODULE
EFFICIENCY

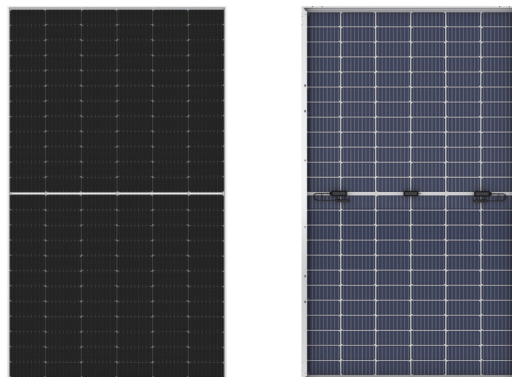
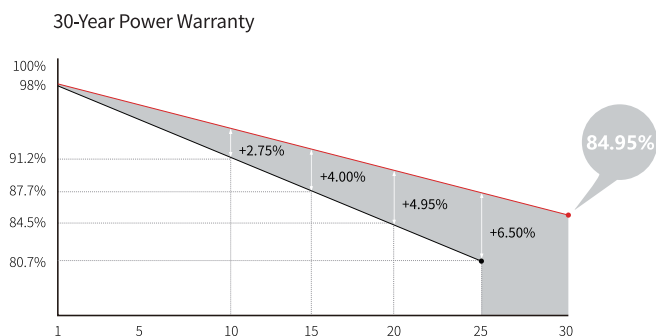
0~+5W
POWER
TOLERANCE

<2%
FIRST YEAR
POWER DEGRADATION

0.45%
YEAR 2-30
POWER DEGRADATION

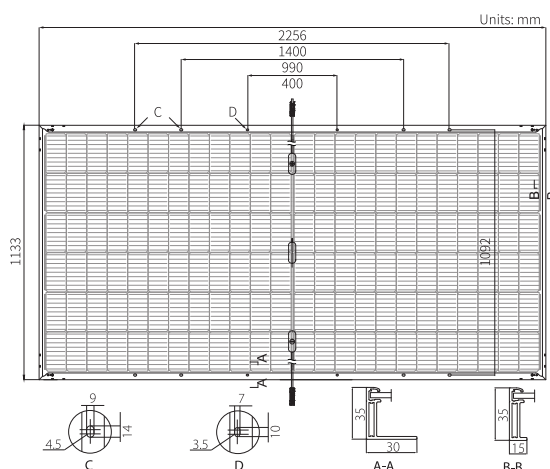
HALF-CELL
Lower operating temperature

Additional Value



Mechanical Parameters

Cell Orientation	144 (6×24)
Junction Box	IP68, three diodes
Output Cable	4mm ² , +400, -200mm/±1400mm length can be customized
Glass	Dual glass, 2.0mm coated tempered glass
Frame	Anodized aluminum alloy frame
Weight	32.3kg
Dimension	2256×1133×35mm
Packaging	31pcs per pallet / 155pcs per 20' GP / 620pcs per 40' HC



Electrical Characteristics

STC : AM1.5 1000W/m² 25°C NOCT : AM1.5 800W/m² 20°C 1m/s Test uncertainty for Pmax: ±3%

Module Type	LR5-72HBD-525M		LR5-72HBD-530M		LR5-72HBD-535M		LR5-72HBD-540M		LR5-72HBD-545M	
	STC	NOCT	STC	NOCT	STC	NOCT	STC	NOCT	STC	NOCT
Maximum Power (Pmax/W)	525	392.1	530	395.8	535	399.5	540	403.3	545	407.0
Open Circuit Voltage (Voc/V)	49.05	45.89	49.20	46.03	49.35	46.17	49.50	46.31	49.65	46.46
Short Circuit Current (Isc/A)	13.65	11.03	13.71	11.08	13.78	11.14	13.85	11.19	13.92	11.24
Voltage at Maximum Power (Vmp/V)	41.20	38.41	41.35	38.55	41.50	38.69	41.65	38.83	41.80	38.97
Current at Maximum Power (Imp/A)	12.75	10.21	12.82	10.27	12.90	10.33	12.97	10.39	13.04	10.44
Module Efficiency(%)	20.5		20.7		20.9		21.1		21.3	

Operating Parameters

Operational Temperature	-40°C ~ +85°C
Power Output Tolerance	0 ~ +5 W
Voc and Isc Tolerance	±3%
Maximum System Voltage	DC1500V (IEC/UL)
Maximum Series Fuse Rating	30A
Nominal Operating Cell Temperature	45±2°C
Protection Class	Class II
Fire Rating	UL type 29
Bifaciality	70±5%

Mechanical Loading

Front Side Maximum Static Loading	5400Pa
Rear Side Maximum Static Loading	2400Pa
Hailstone Test	25mm Hailstone at the speed of 23m/s

Temperature Ratings (STC)

Temperature Coefficient of Isc	+0.050%/°C
Temperature Coefficient of Voc	-0.284%/°C
Temperature Coefficient of Pmax	-0.350%/°C

NX Horizon

Smart Solar Tracking System

Serving as the backbone on over 35 gigawatts of solar power plants around the world, the NX Horizon™ smart solar tracker system combines best-in-class hardware and software to help EPCs and asset owners maximize performance and minimize operational costs.

Flexible and Resilient by Design

With its self-aligning module rails and vibration-proof fasteners, NX Horizon can be easily and rapidly installed. The self-powered, decentralized architecture allows each row to be commissioned in advance of site power, and is designed to withstand high winds and other adverse weather conditions. On a recent 838 megawatt project in Villanueva, Mexico, these design features allowed for the project to go online nine months ahead of schedule.

TrueCapture and Bifacial Enabled

Incorporating the most promising innovations in utility scale solar, NX Horizon with TrueCapture™ smart control system can add additional energy production by up to six percent. Further unlocking the advantages of independent-row architecture and the data collected from thousands of sensors across its built-in wireless network, the software continuously optimizes the tracking algorithm of each row in response to site terrain and changing weather conditions. NX Horizon can also be paired with bifacial PV module technology, which can provide even more energy harvest and performance. With bifacial technology, NX Horizon outperforms conventional tracking systems with over 1% more annual energy.

Quality and Reliability from Day One

Quality and reliability are designed and tested into every NX Horizon component and system across our supply chain and manufacturing operations. NextTracker is the leader in dynamic wind analysis and safety stowing, delivering major benefits in uptime and long-term durability. NX Horizon is certified to UL 2703 and UL 3703 standards, underscoring NextTracker's commitment to safety, reliability and quality.

Features and Benefits

5 years in a row

Global Market Share Leader (2015-18)

35 GW

Delivered on 5 Continents

Best-in Class

Software Ecosystem and
Global Services

Up to 6%

Using TrueCapture Smart
Control System



GENERAL AND MECHANICAL

Tracking type	Horizontal single-axis, independent row.
String voltage	1,500 V _{DC} or 1,000 V _{DC}
Typical row size	78-90 modules, depending on module string length.
Drive type	Non-backdriving, high accuracy slew gear.
Motor type	24 V brushless DC motor
Array height	Rotation axis elevation 1.3 to 1.8 m / 4'3" to 5'10"
Ground coverage ratio (GCR)	Configurable. Typical range 28-50%.
Modules supported	Mounting options available for virtually all utility-scale crystalline modules, First Solar Series 6 and First Solar Series 4.
Bifacial features	High-rise mounting rails, bearing + driveline gaps and round torque tube.
Tracking range of motion	Options for ±60° or ±50°
Operating temperature range	SELF POWERED: -30°C to 55°C (-22°F to 131°F) AC POWERED: -40°C to 55°C (-40°F to 131°F)
Module configuration	1 in portrait. 3 x 1,500 V or 4 x 1,000 V strings per standard tracker. Partial length trackers available.
Module attachment	Self-grounding, electric tool-actuated fasteners.
Materials	Galvanized steel
Allowable wind speed	Configurable up to 225 kph (140 mph) 3-second gust
Wind protection	Intelligent wind stowing with symmetric dampers for maximum array stability in all wind conditions
Foundations	Standard W6 section foundation posts

ELECTRONICS AND CONTROLS

Solar tracking method	Astronomical algorithm with backtracking. TrueCapture™ upgrades available for terrain adaptive backtracking and diffuse tracking mode
Control electronics	NX tracker controller with inbuilt inclinometer and backup battery
Communications	Zigbee wireless communications to all tracker rows and weather stations via network control units (NCUs)
Nighttime stow	Yes
Power supply	SELF POWERED: NX provided 30 or 60W Smart Panel AC POWERED: Customer-provided 120-240 V _{AC} circuit

INSTALLATION, OPERATIONS AND SERVICE

PE stamped structural calculations and drawings	Included
Onsite training and system commissioning	Included
Installation requirements	Simple assembly using swaged fasteners and bolted connections. No field cutting, drilling or welding.
Monitoring	NX Data Hub™ centralized data aggregation and monitoring
Module cleaning compatibility	Compatible with NX qualified cleaning systems
Warranty	10-year structural, 5-year drive and control components.
Codes and standards	UL 3703 / UL 2703 / IEC 62817

100/125kW, 1500Vdc String Inverters for North America



CPS SCH100/125KTL-DO/US-600

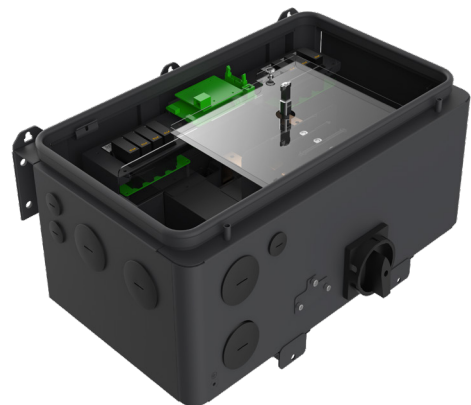
The 100 & 125kW high power CPS three phase string inverters are designed for ground mount applications. The units are high performance, advanced and reliable inverters designed specifically for the North American environment and grid. High efficiency at 99.1% peak and 98.5% CEC, wide operating voltages, broad temperature ranges and a NEMA Type 4X enclosure enable this inverter platform to operate at high performance across many applications. The CPS 100/125kW products ship with the Standard or Centralized Wire-box, each fully integrated and separable with AC and DC disconnect switches. The Standard Wire-box includes touch safe fusing for up to 20 strings. The CPS FlexOM Gateway enables communication, controls and remote product upgrades.

Key Features

- NFPA 70, NEC 2014 and 2017 compliant
- Touch safe DC Fuse holders adds convenience and safety
- CPS FlexOM Gateway enables remote FW upgrades
- Integrated AC & DC disconnect switches
- 1 MPPT with 20 fused inputs for maximum flexibility
- Copper and Aluminum compatible AC connections
- NEMA Type 4X outdoor rated, tough tested enclosure
- Advanced Smart-Grid features (CA Rule 21 certified)
- kVA Headroom yields 100kW @ 0.9PF and 125kW @ 0.95PF
- Generous 1.87 and 1.5 DC/AC Inverter Load Ratios
- Separable wire-box design for fast service
- Standard 5 year warranty with extensions to 20 years



100/125KTL Standard Wire-box



100/125KTL Centralized Wire-box



Model Name	CPS SCH100KTL-DO/US-600	CPS SCH125KTL-DO/US-600
DC Input		
Max. PV Power	187.5kW	
Max. DC Input Voltage	1500V	
Operating DC Input Voltage Range	860-1450Vdc	
Start-up DC Input Voltage / Power	900V / 250W	
Number of MPP Trackers	1	
MPPT Voltage Range ¹	870-1300Vdc	
Max. PV Input Current (Isc x1.25)	275A	
Number of DC Inputs	20 PV source circuits, pos. & neg. fused (Standard Wire-box) 1 PV output circuit, 1-2 terminations per pole, non-fused (Centralized Wire-box)	
DC Disconnection Type	Load-rated DC switch	
DC Surge Protection	Type II MOV (with indicator/remote signaling), Up=2.5kV, In=20kA (8/20uS)	
AC Output		
Rated AC Output Power	100kW	125kW
Max. AC Output Power ²	100kVA (111kVA @ PF>0.9)	125kVA (132kVA @ PF>0.95)
Rated Output Voltage	600Vac	
Output Voltage Range ³	528-660Vac	
Grid Connection Type ⁴	3Φ / PE / N (Neutral optional)	
Max. AC Output Current @600Vac	96.2/106.8A	120.3/127.0A
Rated Output Frequency	60Hz	
Output Frequency Range ³	57-63Hz	
Power Factor	>0.99 (±0.8 adjustable)	>0.99 (±0.8 adjustable)
Current THD	<3%	
Max. Fault Current Contribution (1-cycle RMS)	41.47A	
Max. OCPD Rating	200A	
AC Disconnection Type	Load-rated AC switch	
AC Surge Protection	Type II MOV (with indicator/remote signaling), Up=2.5kV, In=20kA (8/20uS)	
System		
Topology	Transformerless	
Max. Efficiency	99.1%	
CEC Efficiency	98.5%	
Stand-by / Night Consumption	<4W	
Environment		
Enclosure Protection Degree	NEMA Type 4X	
Cooling Method	Variable speed cooling fans	
Operating Temperature Range	-22°F to +140°F / -30°C to +60°C (derating from +108°F / +42°C)	
Non-Operating Temperature Range ⁵	-40°F to +158°F / -40°C to +70°C maximum	
Operating Humidity	0-100%	
Operating Altitude	8202ft / 2500m (no derating)	
Audible Noise	<65dBA@1m and 25°C	
Display and Communication		
User Interface and Display	LED Indicators, WiFi + APP	
Inverter Monitoring	Modbus RS485	
Site Level Monitoring	CPS FlexOM Gateway (1 per 32 inverters)	
Modbus Data Mapping	SunSpec/CPS	
Remote Diagnostics / FW Upgrade Functions	Standard / (with FlexOM Gateway)	
Mechanical		
Dimensions (WxHxD)	45.28x24.25x9.84in (1150x616x250mm) with Standard Wire-box 39.37x24.25x9.84in (1000x616x250mm) with Centralized Wire-box	
Weight	Inverter: 121lbs / 55kg; Wire-box: 55lbs / 25kg (Standard Wire-box); 33lbs / 15kg (Centralized Wire-box)	
Mounting / Installation Angle	15 - 90 degrees from horizontal (vertical or angled)	
AC Termination	M10 Stud Type Terminal [3Φ] (Wire range: 1/0AWG - 500kcmil CU/AL, Lugs not supplied) Screw Clamp Terminal Block [N] (#12 - 1/0AWG CU/AL)	
DC Termination	Screw Clamp Fuse Holder (Wire range: #12 - #6AWG CU) - Standard Wire-box Busbar, M10 Bolts (Wire range: #1AWG - 500kcmil CU/AL [1 termination per pole], #1AWG - 300kcmil CU/AL [2 terminations per pole], Lugs not supplied) - Centralized Wire-box	
Fused String Inputs	20A fuses provided (Fuse values up to 30A acceptable)	
Safety		
Safety and EMC Standard	UL1741-SA-2016, CSA-C22.2 NO.107.1-01, IEEE1547a-2014; FCC PART15	
Selectable Grid Standard	IEEE 1547a-2014, CA Rule 21, ISO-NE	
Smart-Grid Features	Volt-RideThru, Freq-RideThru, Ramp-Rate, Specified-PF, Volt-VAr, Freq-Watt, Volt-Watt	
Warranty		
Standard ⁶	5 years	
Extended Terms	10, 15 and 20 years	

1) See user manual for further information regarding MPPT Voltage Range when operating at non-unity PF

2) "Max. AC Apparent Power" rating valid within MPPT voltage range and temperature range of -30°C to +40°C (-22°F to +104°F) for 100KW PF ≥0.9 and 125KW PF ≥0.95

3) The "Output Voltage Range" and "Output Frequency Range" may differ according to the specific grid standard.

4) Wye neutral-grounded, Delta may not be corner-grounded.

5) See user manual for further requirements regarding non-operating conditions.

6) 5 year warranty effective for units purchased after October 1st, 2019.